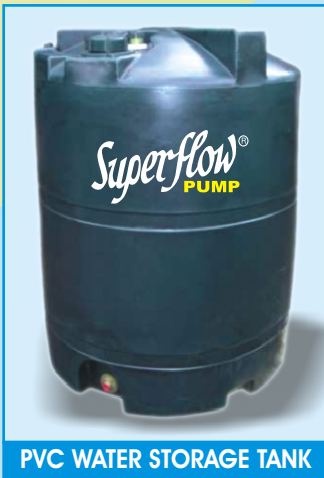


SUPER FLOW FORCE LIFT HAND PUMP



PVC WATER STORAGE TANK



Superflow[®]
PUMP



FIG. 5 MODIFIED PLUNGER ROD FOR FORCE LIFT HAND PUMP

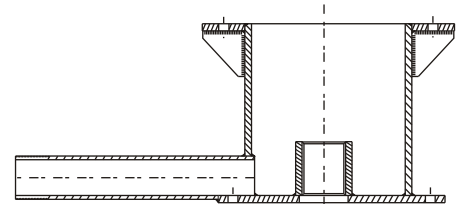


FIG. 2 MODIFIED WATER TANK FOR FORCE LIFT HAND PUMP

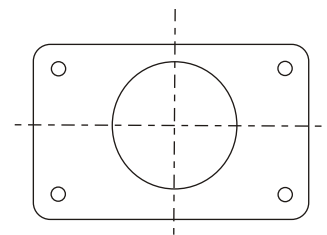


FIG. 3 NITRILE RUBBER GASKET FOR FORCE LIFT HAND PUMP

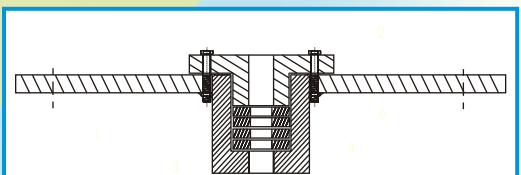


FIG. 4.5 THIRD PLATE ASSEMBLY FOR FORCE LIFT HAND PUMP

ASHOKA INDUSTRIES

122 / 1'C', Sarojini Nagar, Kanpur - 208 012

Phone : 0512 - 2296528, 2212543, 2219836 • Fax : 0512 - 2230024

www.ashokasuperflow.com

ashokasuperflow@gmail.com



ISO 9001: 2000 CERTIFIED CO.

SUPER FLOW FORCE LIFT HAND PUMP

INTRODUCTION

It is desired since long that the basic class children particularly of villages should be provided neat and clean environment in and around the school and for this proper sanitation of schools toilets is the first requirement, which have been neglected so far due to water shortage/storage problem any programme of hygienic toilets is not implemented effectively. The **UNICEF** designed Superflow Force Lift hand pumps are really very effective to improve the sanitation of the

The Superflow Force Lift hand pumps have minor modification in comparison of Deep Well India Mark II hand pump leading to storage of the quantity of water wasted when any child drinks water

from outlet of Deep Well India Mark II hand pump. The quantity of such water instead of its wastage now can be stored in a overhead tank constructed on top of toilet. The capacity of the water storage tank is up to 1000 liters. How ever even the reduce quantity of the water can also be stored and supplied in toilets, the entire operation is without any use of electricity and other external power. The use of Superflow force lift hand pumps have eliminated the age old system of carrying water for cleaning purpose while going to toilets.

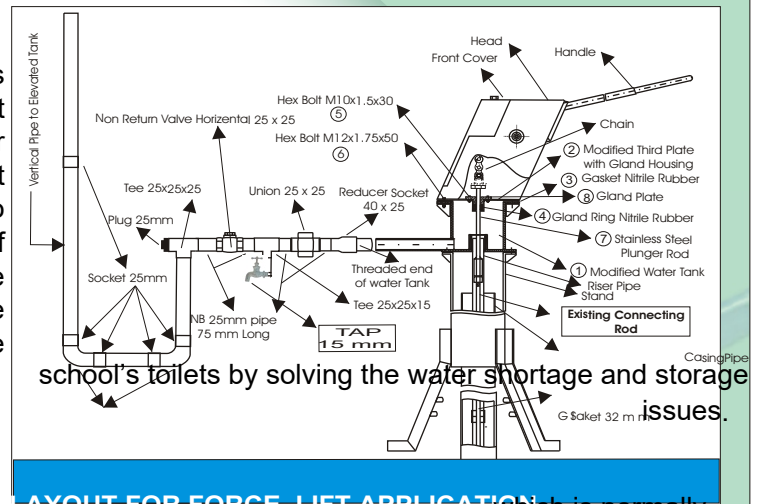
This has created new awareness amongst the children about hygiene and the availability of this excess quantity of water is also being utilized by children for gardening. Although it is a very small beginning but significant progress is being maintained by gradual increase in use of the Superflow force lift hand pumps in all over India and also very popular in Africa and Latin America. In due course of time as these pumps installation spreads it will certainly prove to be a mile stone in respect of creating neat and clean toilet facilities and pollution free environment around the schools.

SALIENT FEATURES

the Superflow force lift hand pumps is a alternative version of Deep Well India Mark II hand pump wherein the water tank spout is threaded and added a modified third plate including gland box and gland plate and gland rings are fitted in the gland box to stop leakage of water, one rubber gasket is sandwiched between the water tank and third plate. A plunger rod of stainless steel m 12 x 1.75 x 450 mm length is jointed with existing connecting rod and this plunger rod will move inside the gland ring to stop the leakage of water similar like mechanical seal. As the plunger rod is made of high quality stainless steel which is having a longer life instead of ms connecting rod. By adding external arrangement with the threaded spout of the water tank, water will be stored in the overhead tank. The installation of Superflow force lift hand pumps are very simple, which will be provided by the ordinary person, there after maintenance is also as simple as installation and spare are easily available for replacement whatever salient feature were already included there in Deep Well India Mark II hand pumps those are already installed in the Superflow force lift hand pumps installation the installation of Superflow force lift hand pumps are almost similar to Deep Well India Mark II hand pump except certain minor changes effecting the internal construction of the pump and for carrying water to be storage in overhead tank only external arrangement and pipe fitting is provided by any men women and mechanic.

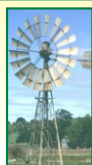
MAINTENANCE

The life of a Superflow force lift hand pump is 35 to 40 years. The internal rubber components, moving parts inside cylinders, ball bearing, chain and axle are required to be changed if they are found defective. Taking into account the prices prevailing in the current year 2007 and depend upon the market fluctuation.



school's toilets by solving the water shortage and storage issues.

which is normally



★ SAFETY ★ DISCIPLINE ★ CLEANLINESS ★ PRODUCTIVITY ★ QUALITY